

# Software MSB

## Description

MSB (Marine Seguimiento de Boyas) is the software for the reception, control and monitoring of Marine Instruments satellite buoys used in tuna fishing.

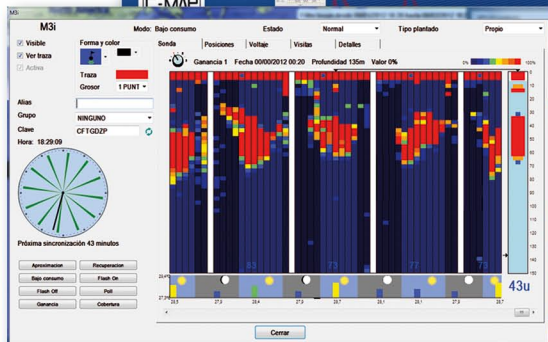
MSB automatically manages the reception of buoy messages (via satellite through the MSR receiver and/or through an Internet connection). Buoy positions and other buoy data are displayed in real time on C-MAP marine charts.

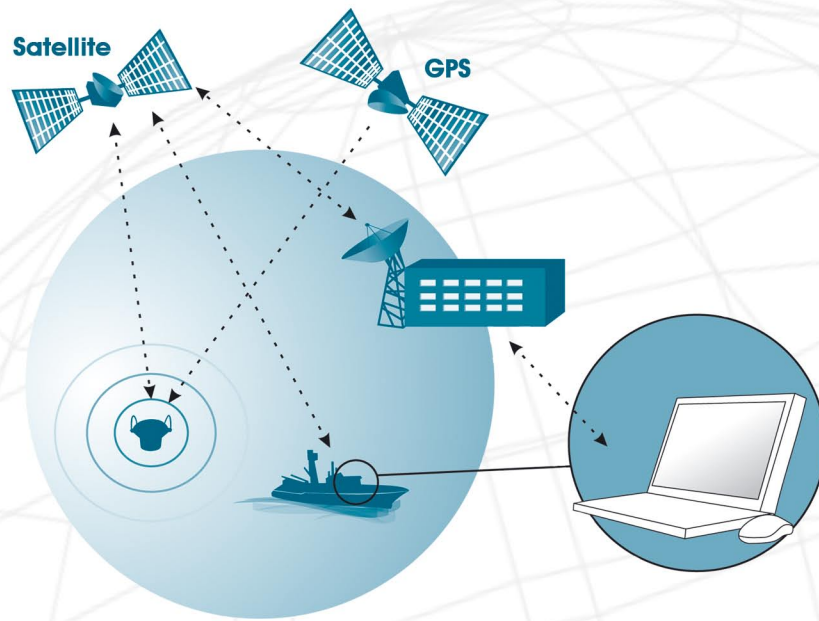
Sending telecommands to buoys directly from the MSB allows an easy change of every buoy operation mode.

These characteristics make the set MSR+MSB an autonomous, quick, reliable and easy-to-use system.

## Features

- Automatic reception through MSR (satellite) and Internet.
- Sending of telecommands to buoys.
- Basic marine C-MAP vectorial charts. Detailed charts available.
- Configurable buoy icons. Visual information of fish detection.
- Speed, course and drift of every buoy.
- Quick view of sounder data on screen. Several palettes to display sounder information.
- Display of the vessel in real time.
- Antenna coverage level.
- Drawing and text tools on the chart.
- Automatic activation of M3i and MSi buoys.
- Buoy groups.
- Compatibility with MaxSea TimeZero, Telaurus Se@Com and CatSat.
- Automatic software updates.





## Technical features

Versión MSB v3.22

MSR Antenna connected to the PC

Operating system Windows 7, Vista or XP

Minimal requirements: 1.5GHz processor, 1GB RAM memory and 2GB hard disk available. 2.5GHz processor and 2GB RAM are recommended.

Minimal recommended resolution 1280x1024. The visualization is recommended in a 19" monitor or higher.

